

State of Wyoming Corner Record

(In compliance with the *CORNER PERPETUATION AND FILING ACT*, Wyoming Statutes, 1997 Section 33-29-140 et. seq., and the Rules and Regulations of the Board of Professional Engineers and Professional Land Surveyors)

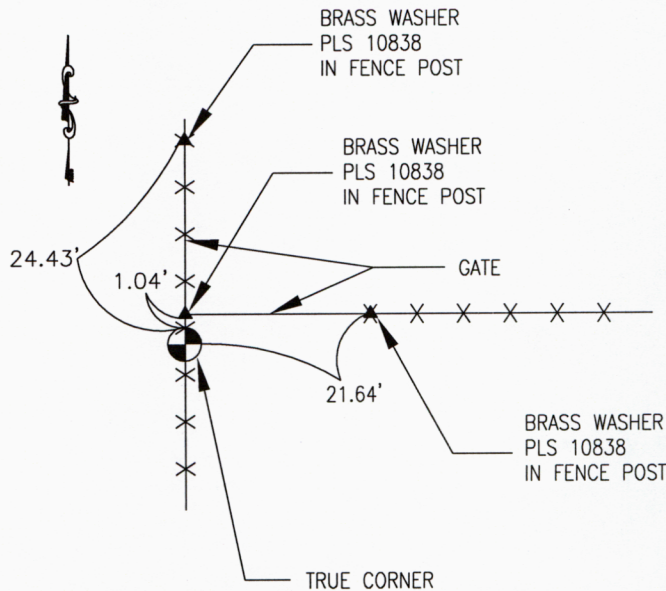
Reverse side of this form may be used if more space is needed.

Record of original survey and citation of source of historical information (if corner is lost or obliterated). Description of corner monumentation evidence found and/or monument and accessories established to perpetuate the location of this corner. Sketch of relative location of monument, accessories, and reference points with course and distance to adjacent corner(s) (if determined in this survey). Method and rationale for reestablishment of lost or obliterated corner.

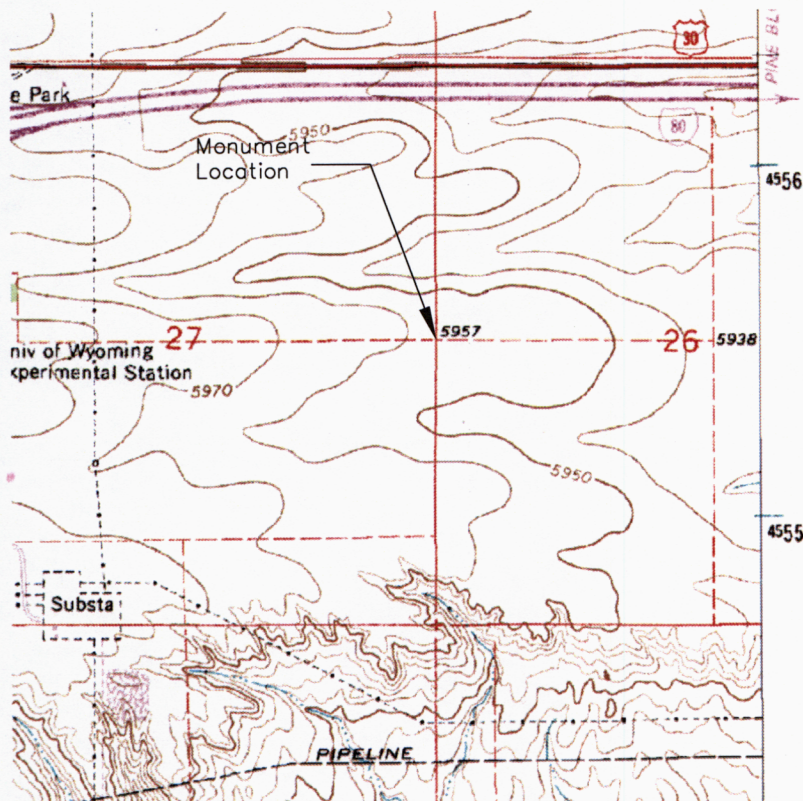
FOUND: ON FIRST INVESTIGATION, THE ORIGINAL STONE, WHICH WAS MEASURED AND RECORDED. ON RETURNING TO REPLACE THE DETERIORATED STONE WITH A CURRENT MONUMENT, THE STONE WAS FOUND TO BE REMOVED BY AN UNKNOWN PARTY.

TIES: N00° 03' 50"E, 2640.94' TO NW 26
S00° 05' 19"W, 2635.00' TO SW 26

SET: A 3/4" ALUM. CAP ON A 3/4" X 30" REBAR, STAMPED AVI PC WY PLS. NO. 10838, MARKED APPROPRIATELY, BASED ON THE MEASURED LOCATION OF THE ORIGINAL STONE. REFERENCE POINTS SET AS SHOWN.



Location Sketch



Monument location

A.V.I. P.C.
 T14N 1/4 R65W
 27 | 26
 2007
 P.L.S. NO. 10838



Monument Inscription

Date of Field Work: 6/28/07

Office Reference: 2807

Cross Index Plat

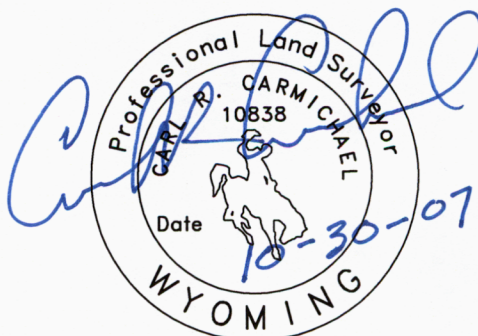
	1	2	3	4	5	6	7	8	9	10	11	12	13	14	15	16	17	18	19	20	21	22	23	24	25		
A																											A
B																											B
C		6			5				4					3					2						1		C
D																											D
E																											E
F																											F
G																											G
H																											H
J																											J
K																											K
L																											L
M																											M
N																											N
O																											O
P																											P
Q																											Q
R																											R
S																											S
T																											T
U																											U
V																											V
W																											W
X																											X
Y																											Y
Z																											Z
	1	2	3	4	5	6	7	8	9	10	11	12	13	14	15	16	17	18	19	20	21	22	23	24	25		

Firm/Agency, Address

This corner record was prepared by me or under my direction

AVI P.C. _____ and supervision.
 2035 WESTLAND RD. _____ SEAL & SIGNATURE
 CHEYENNE, WY. 82001 _____

Telephone Number: 307-637-6017



Corner Name West 1/4 Corner Section 26, T 14 N, R 65 W, 6th P.M.

Cross-Index No.: T-17

County: LARAMIE Wyoming
 SBRPEPLS/PLSW: March 1994; PLSW January 1998

RECORDED 10/31/2007 AT 9:15 AM REC# 486873 K# 2031 PG# 1070
 DEBRA K. LATHROP, CLERK OF LARAMIE COUNTY, WY PAGE 1 OF 2



View North



View East


 RECORDED 10/31/2007 AT 9:15 AM REC# 486873 3K# 2031 PG# 1071
 DEBRA K. LATHROP, CLERK OF LARAMIE COUNTY, WY PAGE 2 OF 2



View South



View West